

DEKALB

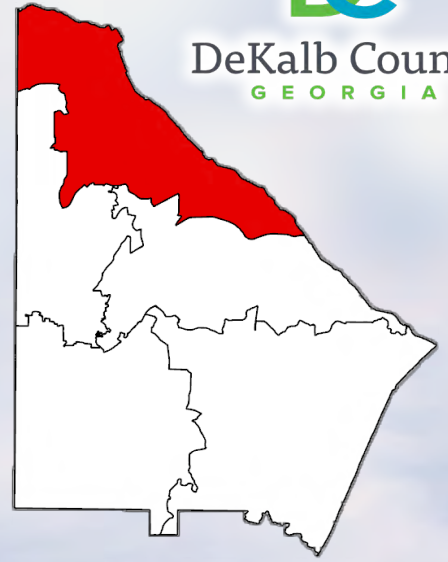
COMMISSION DISTRICT 1

PROFILE

*Produced By DeKalb County Planning and Sustainability
Long Range Division*



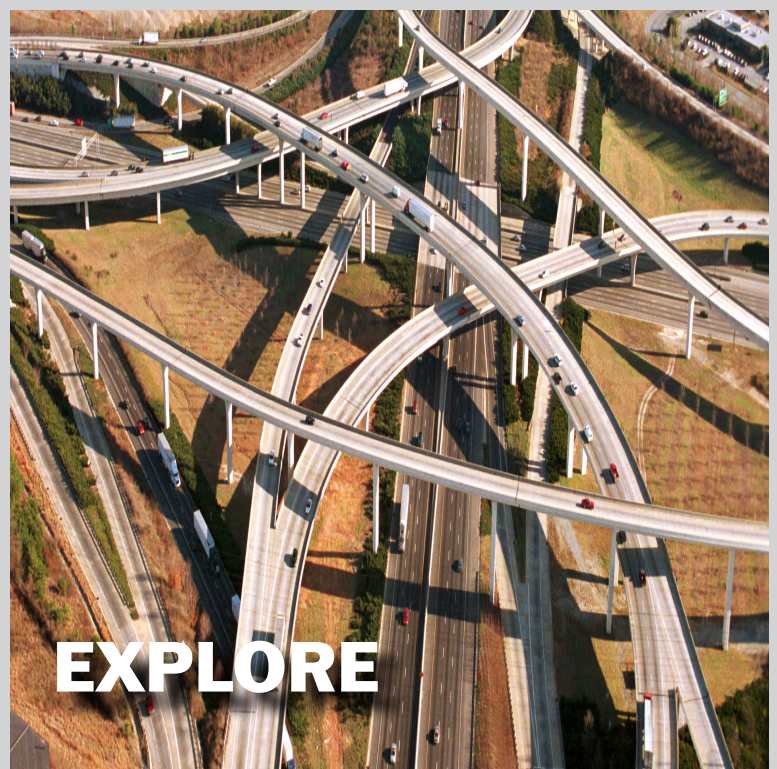
DeKalb County
GEORGIA



DISCOVER



EXPERIENCE



EXPLORE

INTRODUCTION

COMMISSION DISTRICT 1



Dunwoody Nature Center

COMMISSION DISTRICT 1

Commission District 1 covers much of northern DeKalb County, including the cities of Dunwoody, Chamblee, and Doraville, and part of the city of Tucker. 74% of the district's population lives in incorporated areas, while 26% lives in unincorporated DeKalb. Some notable landmarks in the district include DeKalb-Peachtree Airport in Chamblee, the Mercer University Atlanta Campus, and the new Assembly Atlanta studio in Doraville. The district has been represented by Commissioner Robert Patrick since January 1, 2021.

District Landmarks



DeKalb- Peachtree Airport



Diverging Diamond Intersection



Assembly Atlanta



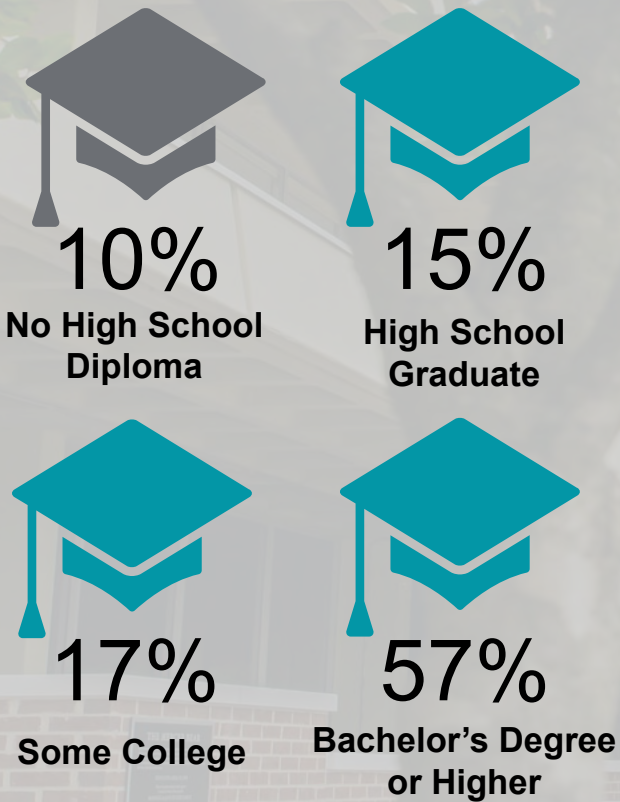
Mercer University Atlanta Campus

Robert Patrick has served as District 1 Commissioner since 2021



POPULATION CHARACTERISTICS

COMMISSION DISTRICT 1



Mercer University Atlanta Campus

POPULATION TRENDS AND KEY FEATURES

The district had a population of about 155K in the 2020 Census, up 15K from 2010. The population of District 1 has increased steadily over the past few decades and is projected to continue increasing in coming years.

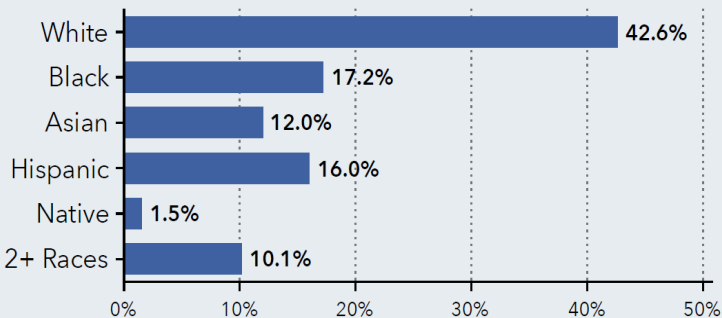


Median Age

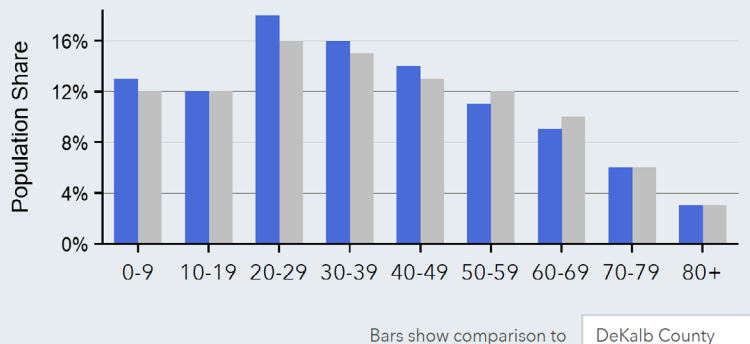


156,275
Total Population

District Population by Race



Age Profile



Bars show comparison to DeKalb County

The age profile shows population is dominated by younger adults aged 20-40. The district notably has a lower share of people in their 50s and 60s compared to the county as a whole. The district is racially diverse and majority-minority, with Whites as the largest racial group. (Source: US Census)



Buford Highway Farmer's Market c. Wendy Zheng

HOUSING CHARACTERISTICS

COMMISSION DISTRICT 1

HOUSING AND INCOME

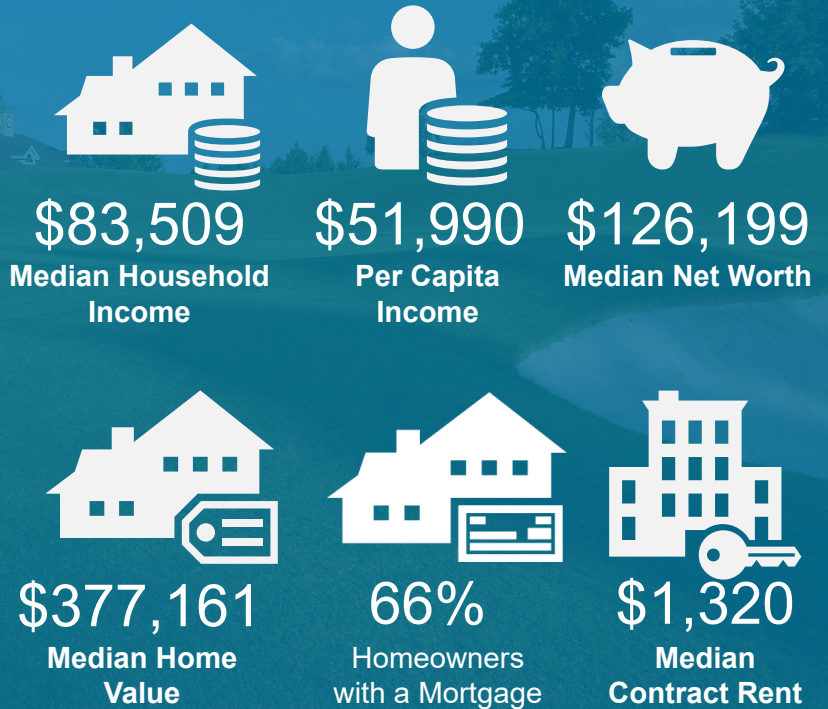


Smoke Rise County Club

62,417
Households

2.4
Average Size
of Household

This district has a median household income of \$83K, which is above the county average of \$69K (Source: US Census Bureau).



The vast majority of housing in the district was built post-1960, with the largest share being built in the 1960s and 1970s. New housing construction dropped off significantly during and after the Great Recession. The district is fairly evenly split between owners and renters, with owners having a slight majority. (Source: ACS 2021)



7%
2022 Vacant Housing Units

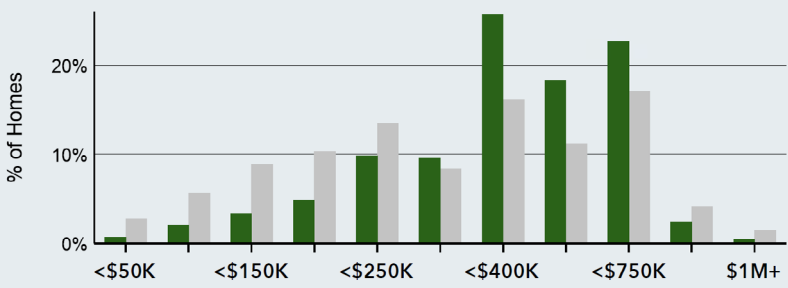


47%
2022 Renter Occupied Housing Units



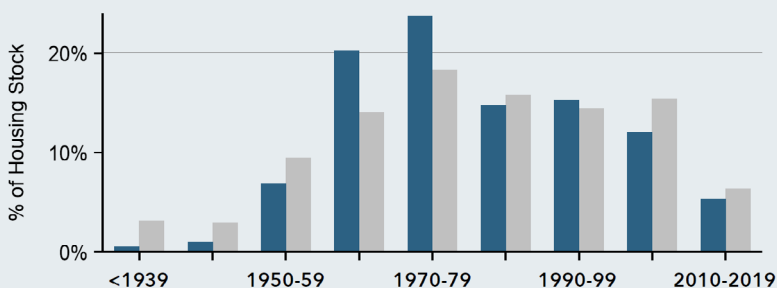
53%
2022 Owner Occupied Housing Units

Home Value



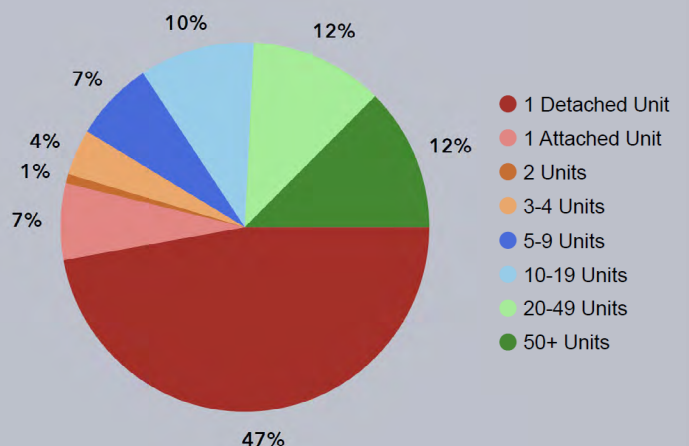
Bars show comparison to DeKalb County

Housing Stock by Year Built



Bars show comparison to DeKalb County

Housing by Number of Units



ECONOMIC CHARACTERISTICS

COMMISSION DISTRICT 1

EMPLOYMENT AND COMMUTE PROFILE

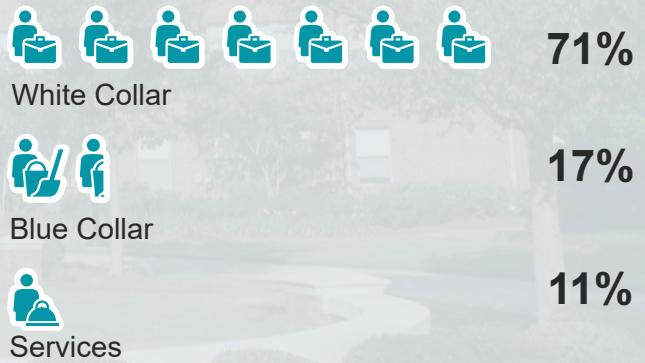


Mercer University Atlanta Campus

BUSINESS

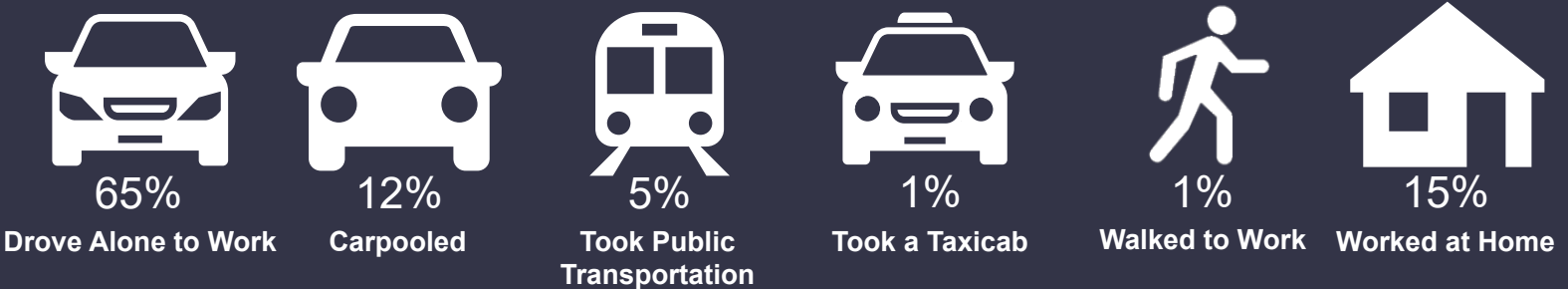


EMPLOYMENT TYPE



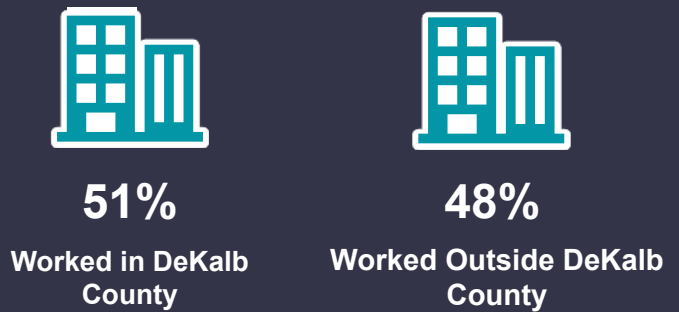
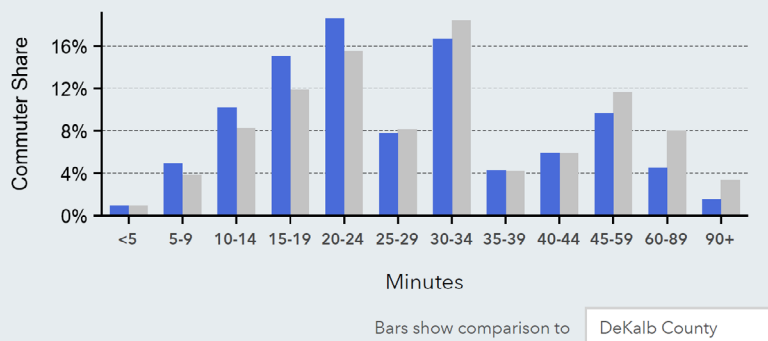
At 71%, the overwhelming majority of the workforce in District 1 is classified as “White Collar”, a category that includes most office and professional jobs. The unemployment rate for the district is below the county average of 4%. (Source: ACS 2022)

TRANSPORTATION TO WORK



The overwhelming majority of workers in District 1 commute to work via automobile, with most of those driving alone. Despite the presence of a MARTA rail line in the district, only 5% of workers take public transportation. Most workers in the district have a commute time of between 20 and 34 minutes. The workforce is fairly evenly split between people who work inside of DeKalb County and people who work outside it. (Source: ACS 2022)

TRAVEL TIME TO WORK



CREDITS AND CONTACT

COMMISSION DISTRICT 1



DeKalb-Peachtree Airport c. Curtis Compton

District 1 Office Contact Information



Robert Patrick

Commissioner

rjpatrick@dekalbcountyga.gov
commissionerrobertpatrick.com

Tara Smith

Chief of Staff

tmsmith1@dekalbcountyga.gov



Sonya Isaac

Constituent Affairs Manager

spisaac@dekalbcountyga.gov



Aiun Nettles

Communications Manager

ajnettles@dekalbcountyga.gov



DeKalb County Department of Planning and Sustainability - Long Range Planning Division

CONTACT US

Cedric Hudson
Interim Director
chudson@dekalbcountyga.gov

Sylvia Smith
Long Range Planning Manager
sasmith@dekalbcountyga.gov

Or visit us at:

www.dekalbcountyga.gov/planning-and-sustainability/planning

City Website Links:

[Chamblee](#)

[Doraville](#)

[Dunwoody](#)

[Tucker](#)